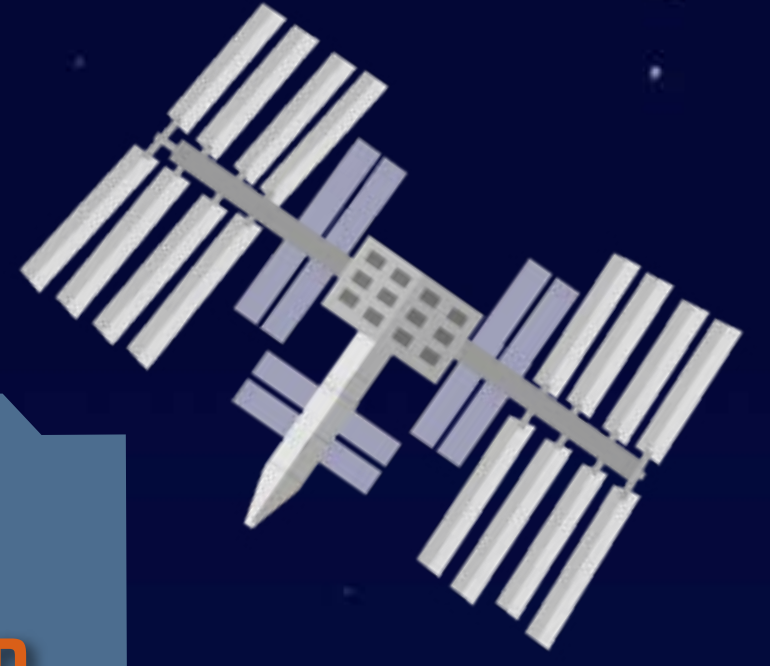


NASA

JOHNSON SPACE CENTER

- JOHNSON SPACE CENTER MAIN CAMPUS
- SONNY CARTER TRAINING FACILITY/ NATURAL BUOYANCY LAB
- ELLINGTON FIELD



NASA AND HIGHER EDUCATION IN TEXAS

2018 PAYMENTS TO TEXAS UNIVERSITIES AND AFFILIATED RESEARCH ORGANIZATIONS FOR GRANTS AWARDED BY NASA

ENTITY	FUNDING PROVIDED IN 2018
CENTER FOR THE ADVANCEMENT OF SCIENCE	\$11,808,000
BAYLOR COLLEGE OF MEDICINE	\$7,924,000
UNIVERSITIES SPACE RESEARCH ASSOCIATION	\$6,838,000
TEXAS A&M UNIVERSITY	\$922,000
UNIVERSITY OF TEXAS MEDICAL BRANCH	\$907,000
UNIVERSITY OF HOUSTON SYSTEM	\$624,000
ALPHA SPACE TEST AND RESEARCH ALLIANCE	\$502,000
UNIVERSITY OF TEXAS SOUTHWESTERN MEDICAL CENTER	\$444,000
WILLIAM MARSH RICE UNIVERSITY	\$362,000
UNIVERSITY OF TEXAS AT AUSTIN	\$318,000
TEXAS TECH UNIVERSITY SYSTEM	\$166,000
UNIVERSITY OF TEXAS AT EL PASO	\$95,000
PRAIRIE VIEW A&M UNIVERSITY	\$78,000
TEXAS A&M ENGINEERING EXPERIMENT STATION	\$52,000
METHODIST HOSPITAL	\$29,000
TEXAS A&M AGRILIFE RESEARCH	\$20,000
GRAND TOTAL	\$31,088,000

NASA PAID OUT **\$375 Million** IN GRANTS TO TEXAS UNIVERSITIES AND AFFILIATED RESEARCH ORGANIZATIONS, 2010-2018

DIRECT AND INDIRECT EMPLOYMENT **52,352**
 GROSS DOMESTIC PRODUCT **\$4.7 Billion**
 OUTPUT **\$7.9 Billion**

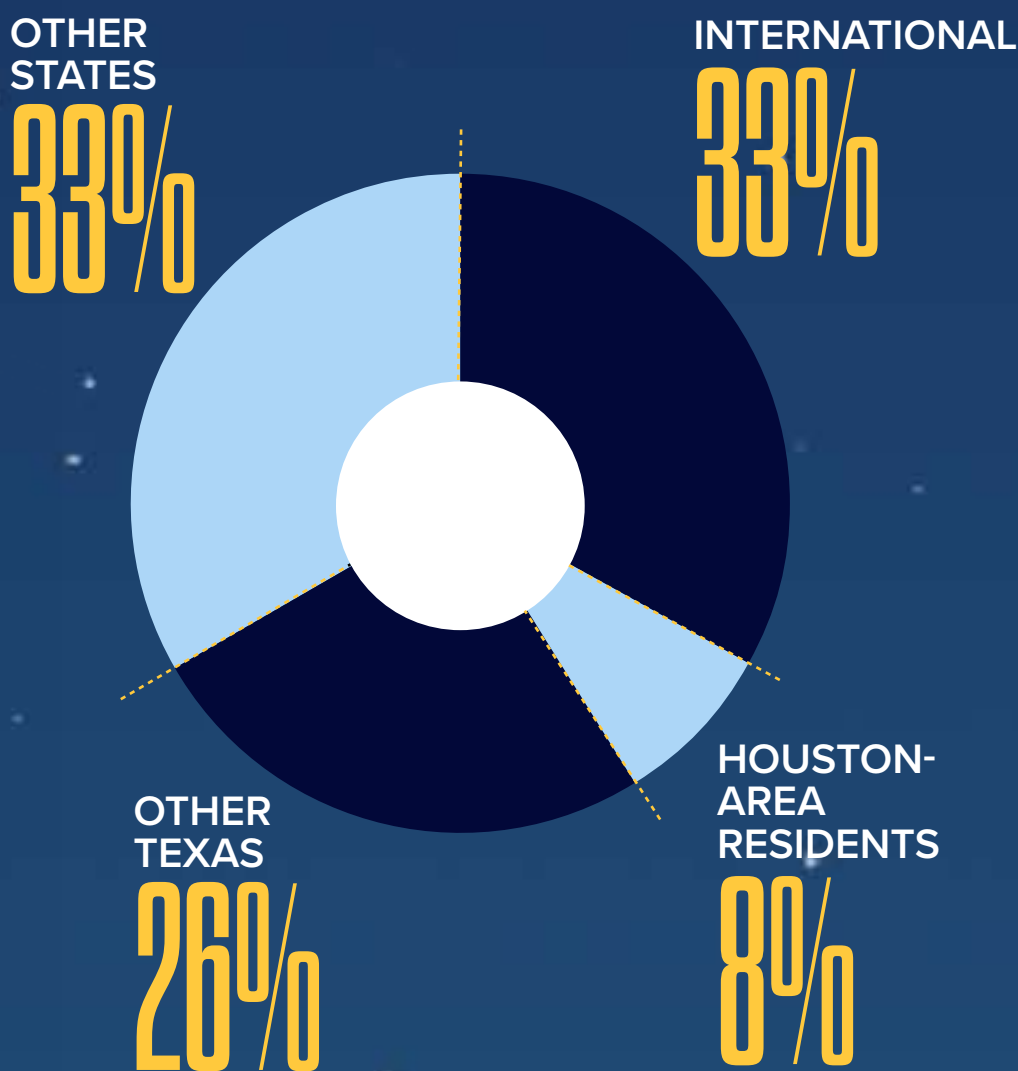
JSC AND SMALL BUSINESSES

THE SMALL BUSINESS INNOVATION RESEARCH/SMALL BUSINESS TECHNOLOGY TRANSFER PROGRAM (SBIR/STTR) PROVIDES OPPORTUNITIES FOR SMALL BUSINESSES TO COLLABORATE WITH NASA ON RESEARCH AND DEVELOPMENT EFFORTS IN KEY TECHNOLOGY AREAS.

146 SMALL BUSINESSES
\$123 Million AMOUNT THE STTR PROVIDED TO PARTICIPATING SMALL BUSINESSES IN 2018

SPACE CENTER HOUSTON

VISITORS TO THE JSC IN 2018



AN ESTIMATED **1.1 Million** PEOPLE VISITED JSC IN 2018



OUT-OF-STATE VISITORS SPEND MORE THAN

\$150 Million

ANNUALLY AS A RESULT OF THEIR VISITS TO JSC, GENERATING ABOUT

\$10 Million

IN STATE TAXES.

Sources: NASA, Texas Comptroller of Public Accounts, REMI, Johnson Space Center

